

# PROBY'S QUAY | AT ST. FINBARR'S STREET



## Public Realm Improvements

- Provide seating pockets or 'pocket park' area for rest and reflection with a beautiful protected view to St. Fin Barre's Cathedral
- Install planters and trees for street greening and a more vibrant quality of life
- Widen narrow footpaths while still allowing for adequate traffic flow at this busy intersection
- Install traffic table at uncontrolled pedestrian crossing to slow vehicles and warn both of the potential hazard.
- Upgrade existing loading zone/coach drop off.
- Removal of overhead power cables to enhance the existing protected views of St. Fin Barre's Cathedral



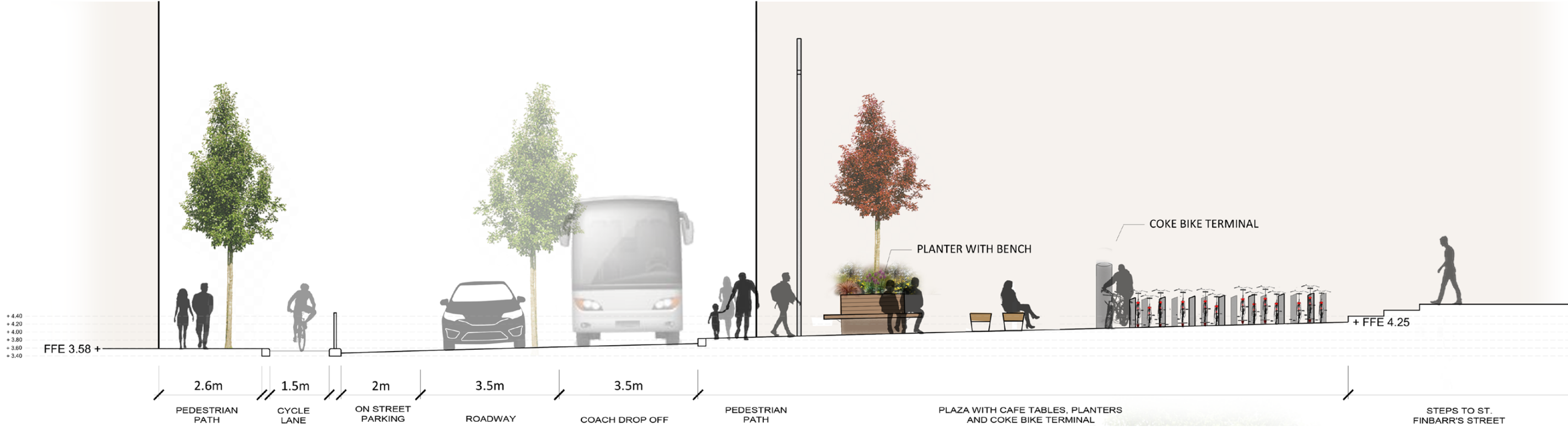
Existing Street View

## LEGEND

- ① On street parking to remain
- ② Traffic Table - to slow vehicles in high traffic pedestrian area
- ③ Enhanced plaza area with planters and seating areas.
- ④ Coach Drop off zone and improved loading bay
- Proposed Street Tree
- Existing Kerb Line
- Proposed raised access pedestrian crossing
- Bench/Individual Seat



PROBY'S QUAY | SECTION G



Specialty 'Wand' lighting reference image



Pocket park character image with seating and greenery

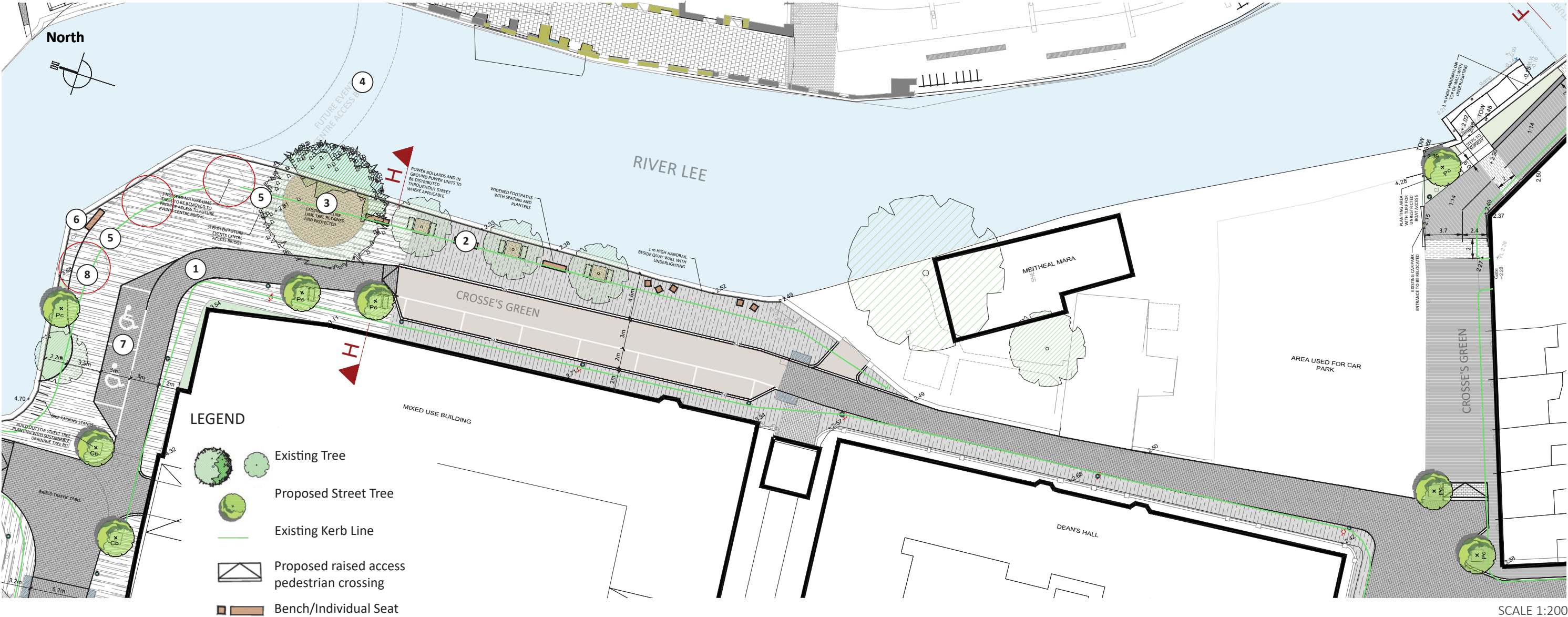


Coke Bike Terminal to be enhanced.

SCALE 1:100



# CROSSE'S GREEN



## Public Realm Improvements

- Highlight Key specimen tree and new bridge to act as a terminus to the city spine with key views all the way from Oliver Plunkett Street
- Create a place of movement and circulation from the bridge to Hanover Street and down to Proby's Quay
- Provide seating pockets for rest and reflection with a beautiful protected view to the river and newly built Event's Centre and proposed bridges.
- Modify and widen narrow footpaths for higher volume of pedestrian traffic
- Provide two disabled parking bays for ease of access.
- Provide a cantilevered outlook for an opportunity to stop and take in the vistas and views of the surrounding area.
- Install planters and trees for street greening and a more vibrant quality of life



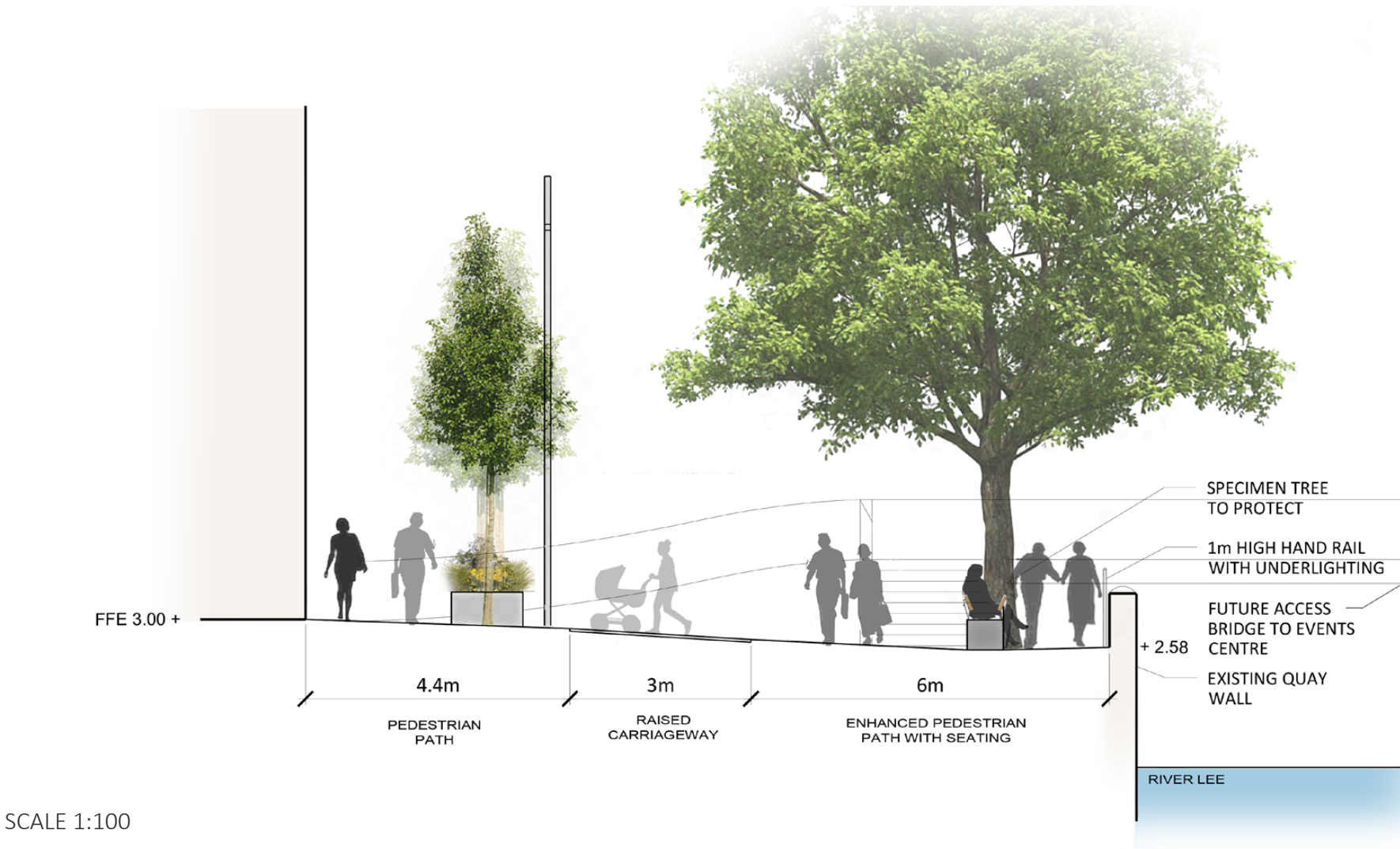
Existing Street View

## LEGEND

- ① Traffic table to allow for shared space plaza at bridge landing
- ② Dual backed bench seating overlooking the river and new Events Centre
- ③ Specimen Tree to be protected
- ④ Proposed Bridge Location
- ⑤ Ramp or Steps from proposed bridge leading into public realm
- ⑥ Cantilevered Lookout
- ⑦ New disabled parking bay location
- ⑧ 3 no. Trees to be removed



CROSSE’S GREEN | SECTION H



Existing Specimen Tree to be Protected



Proposed Cantilevered Outlook



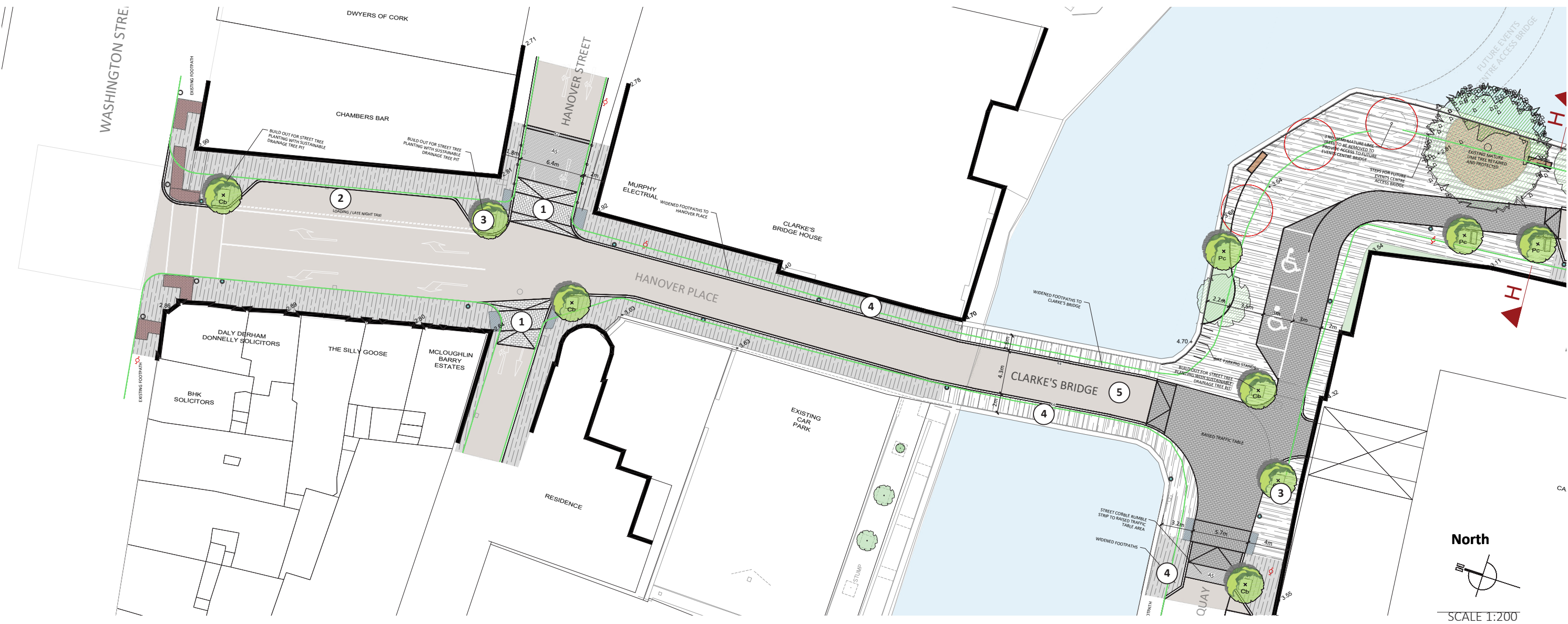
Riverside bench and seating pods character image



Dual Backed Seating Reference image



# HANOVER PLACE | CLARKE'S BRIDGE



## Public Realm Improvements

- Modify paving materials at Clarke’s Bridge while preserving its historic stature
- Install raised traffic table at the Wandesford Quay intersection to compensate for heavier pedestrian flow and slow vehicular traffic at this busy intersection
- Install cobble ‘rumble strip’ at Wandesford Quay to warn vehicles they are entering a pedestrian zone.
- Widen narrow footpaths while still allowing for adequate traffic flow
- Install traffic table at pedestrian crossings through Hanover Street to slow vehicles and warn both of the potential hazard.
- Upgrade loading zone/Late night taxi drop off.
- Install street trees for street greening and to assist in traffic calming






Existing view to Clarkes Bridge



Proposed urban greening reference image

## LEGEND

- ① Traffic table at controlled pedestrian crossing
- ② Improved loading bay/taxi drop off zone
- ③ Proposed urban street greening
- ④ Widened pedestrian path
- ⑤ Historic Clarke’s Bridge
-  Proposed Street Tree
-  Existing Kerb Line
-  Proposed raised access pedestrian crossing



# MATERIALS PALETTE

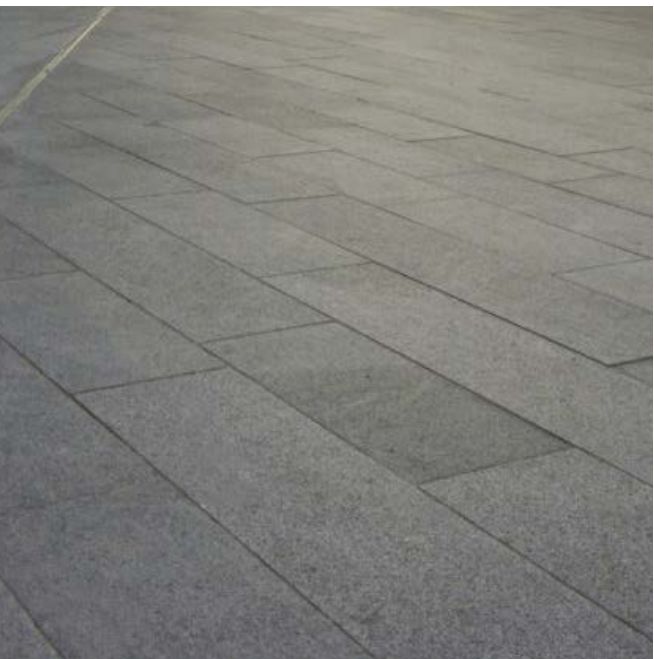
## Hard Landscape Materials



PAVING TYPE A: Granite Paving Setts  
Size: 150 x 150 x 150mm thickness  
150 x 150 x 100mm at building threshold  
Colour: Dark Granite (G-B-006)



PAVING TYPE B: Granite Paving Setts  
Size: 150 x 150 x 150mm thickness  
150 x 150 x 100mm at building threshold  
Colour: Light Granite (G-B-010)



PAVING TYPE C: Granite Block Paving  
Size: 600 x 300 x 80mm thickness  
Colour: Dark Granite (G-B-004)



PAVING TYPE D: Granite Paving Setts  
Size: TBC to match Bishop Lucey Park  
Colour: Red Granite



PAVING TYPE E: Granite Aggregate Paving  
Size: 400x250x120mm thickness.  
Colour: Silver Granite



PAVING TYPE F: Granite Block Setts (alternating pattern)  
Sizes: 100mm thickness  
Colour: Light Granite and Dark Granite



# MATERIALS PALETTE

## Hard Landscape Materials



PAVING TYPE G: Red Chip Asphalt at Cycle Lane  
Size: To Engineers Details  
Colour: Red



PAVING TYPE A: Standard Stone Mastic Asphalt  
Size: To Engineers Details  
Colour: Grey



PAVING TYPE B: Street Print Asphalt  
Size: To Engineers Details  
Colour: Dark Grey



PAVING TYPE C: Granite Block Paving  
Size: 100 x 100 x 100 mm limestone cobbles, fan-tail pattern Top of Hill: Varied 100-150mm x random lengths  
Colour: Blue Grey



PAVING TYPE E: Three Tone Granite Setts  
Size: 100 x 100 x 100mm thickness  
Colour: Mix of reds, brown, greys, and golds



PAVING TYPE F: Irish Limestone Slab  
Sizes: 600 x 450-900mm random lengths  
Colour: Blue Grey



# MATERIALS PALETTE

## Hard Landscape Materials



PAVING TYPE G: Resin Bound Aggregate

Size: To Engineers Details

Colour: Beige



KERB TYPE 1: Dark Stone Kerb

Size: 300x300x914mm

Colour: Dark Granite



KERB TYPE 2: Flush Kerb (Stone Banding)

Size: 300x300x914mm

Colour: Dark Granite



KERB TYPE 3: Chamfered Stone Kerb at Cycle Lane

Size: 300x300x914mm

Colour: Dark Granite



KERB TYPE 4:

Sizes: 200x200x914mm

Colour: Light Grey Granite



KERB TYPE 5: Standard Kerb

Size: 200mm Standard Pre Cast Kerb

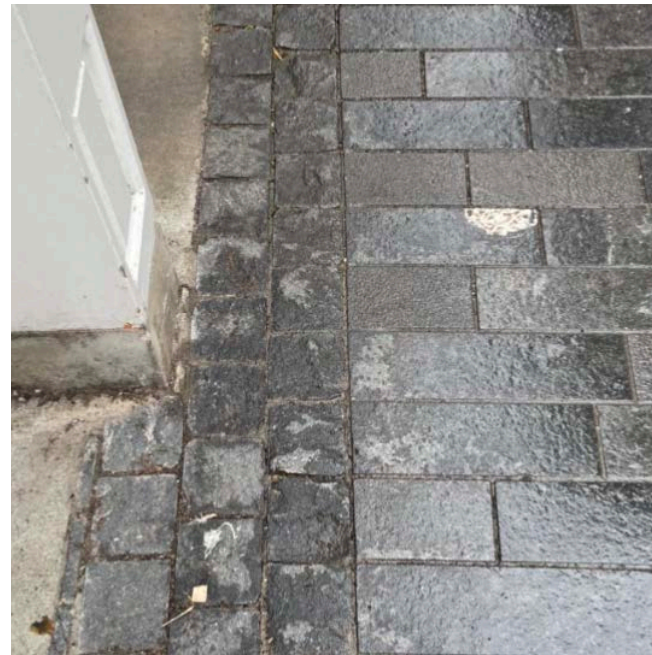


# MATERIALS PALETTE

## Hard Landscape Materials



Galvanized **recessed manhole covers** where required



**Enhanced Building Threshold**



**Slot Drain** seamlessly integrated into paving



**Retention Sockets** for all bollards and street sign columns



**Tree Grille** to guard and support proposed street trees



**Bollards** to match existing on St. Patrick's Quay. Retractable **Electronic Bollards** at Tuckey St.



# MATERIALS PALETTE

## Street Furnishings



Dual Backed Seating



Wood and Galvanized Steel seating



Singular seating elements with LED Lighting



Planter with wrap around bench



Large Steel Planter Box



Linear galvanized steel planter



Cycle Racks - Consistent with Existing



Litter Bin - Consistent with Existing



# MATERIALS PALETTE

## Soft Landscape - Urban Greening

The revitalised Beamish and Crawford Quarter aims to implement sustainable design strategies and celebrate green space. Street trees line the footpaths and roadways complimented by low level planting beds in some spaces and a variety of planters in others. The greening strategy is used to help shape urban parklets and bring sensory vibrancy to the site overall.

As part of the sustainable urban greening strategy a SUDS Arbor System is proposed beneath the surface of all new street trees and planting beds. Tree planting in paved areas require tree pits, with root barriers, and supported paving tree planting pits to ensure the best possible environment for street trees to be protected and flourish.

A small range of cohesive yet diverse street trees have been chosen for the site for their attractive and unique elements. The columnar trees are tough, resilient and attractive with a range of beautiful vibrant autumn colour and some with gorgeous budding flowers in the spring.





# MATERIALS PALETTE

## Soft Landscape - Street Trees



*Carpinus betulus* 'Frans Fontaine'



*Pyrus calleryana* 'Chanticleer'



*Liquidambar styraciflua* 'Worplesdon'



# MATERIALS PALETTE

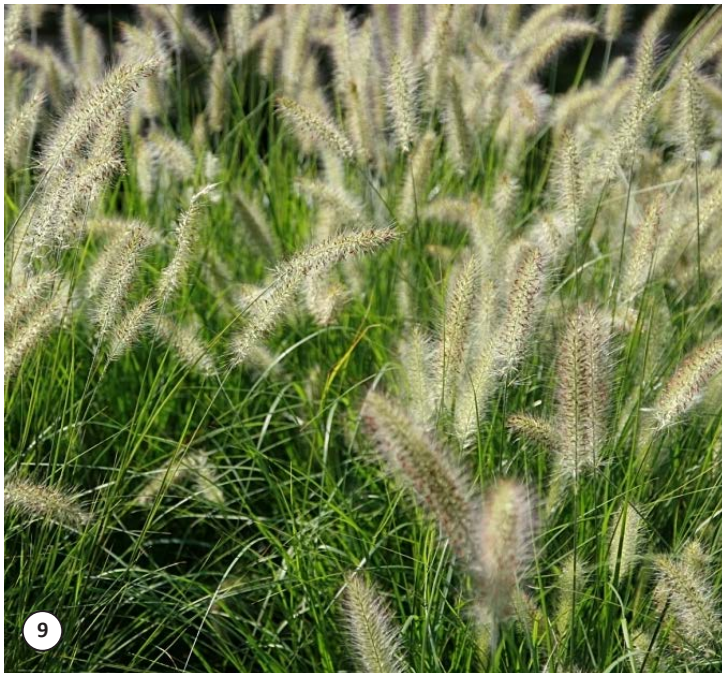
## Soft Landscape - Planting

The site will showcase a variety of attractive perennial plant mixes. This includes low level and low maintenance, mixed perennial/shrub planting which will provide year round interest, enhance neighbourhood centre character and be ‘pollinator friendly’.

As part of the Beamish and Crawford Quarter greening strategy these plant mixes are proposed in a variety of locations around the site including Tuckey St., Proby’s Quay and in various planters throughout the site.

### LOW LEVEL BLOCK PLANTING

- 1 *Salvia nemorosa* ‘Amethyst’
- 2 *Geranium* ‘Orion’
- 3 *Rudbeckia fulgida* ‘Goldsturm’
- 4 *Sedum spectabile*
- 5 *Nepeta* ‘Greenhills giant’
- 6 *Hakonechloa macra*
- 7 *Stipa tenuisfolium* ‘Ponytails’
- 8 *Anemanthele lessoniana*
- 9 *Pennisetum alopecuroides* ‘Hamlyn’
- 10 *Persicaria affinis* ‘Superba’
- 11 *Persicaria amplexicaulis* ‘Fat Domino’
- 12 *Calamagrostis* ‘Karl Forster’
- 13 *Taxus baccata*





# APPENDIX: CULTURAL HERITAGE / CONSERVATION

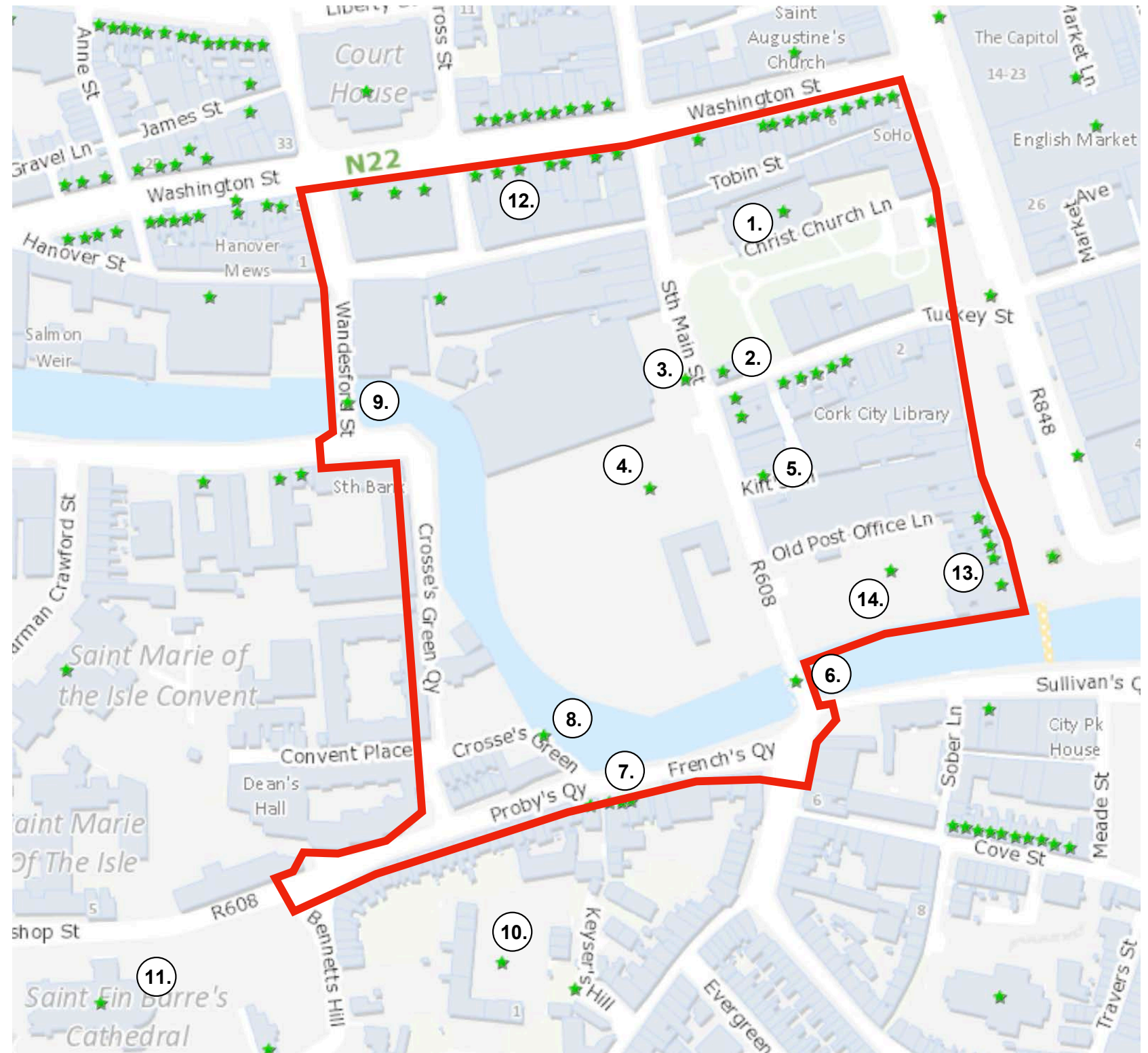
## Historic Context: Protected Structures

The site includes quite a number of Protected Structures, included in the City Council Record of Protected Structures.

Protected structures within/close to the proposed development include:

- ① PS329 - Christ Church.
- ② PS1154 - The Oval Bar.
- ③ PS1012 - South Main Street Post Office.
- ④ PS330 - Half-timbered frontage to Beamish & Crawford Brewery
- ⑤ PS1157 - 32,33 South Main Street
- ⑥ PS328 - South Gate Bridge
- ⑦ PS095-8 - French's Quay
- ⑧ PS1131 - French's Quay slipway and single arch bridge.
- ⑨ PS026 - Clarke's Bridge
- ⑩ PS005 - Elizabeth Fort
- ⑪ PS022 - St. FinBarre's Cathedral.
- ⑫ Washington street frontages.
- ⑬ PS115- 120 46-50 Grand Parade.
- ⑭ PS276 - Fragment of City Wall in City Car Park

Each is important in its own right and all are alongside the works and close by are impacted to some degree. The proposed works set out to improve the setting of these important buildings in this historic part of the city.





# APPENDIX: CULTURAL HERITAGE / CONSERVATION

## Historic Context: Recorded Monuments

The proposed development lies within the southern end of the historic, walled, medieval city of Cork and within the Zone of Archaeological Potential for the historic city as listed in the Record of Monuments Places (RMP) for Co Cork and the Sites and Monuments Record (SMR) database of the Archaeological Survey of Ireland. Monuments indicated in red on map. The site includes a number of Protected Structures and a significant number of buildings listed on the National Inventory of Architectural Heritage, indicated here in blue dots.

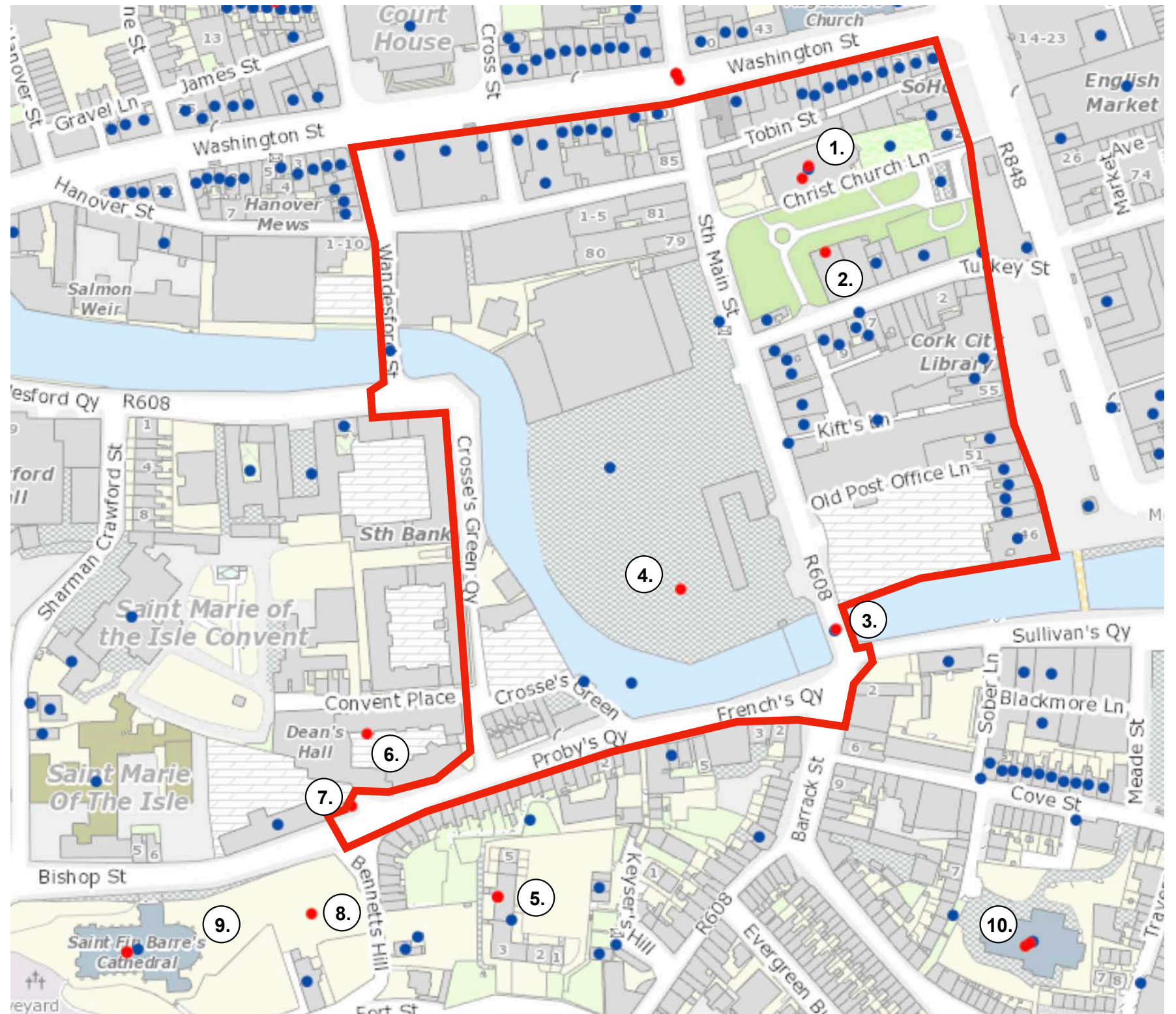
### Monument Protection:

At present, a monument is protected in one of four ways:

- It is recorded in the Record of Monuments and Places (RMP).
- It is registered in the Register of Historic Monuments (RHM).
- It is a national monument subject to a preservation order (or temporary preservation order).
- It is a national monument in the ownership or guardianship of the Minister for Culture, Heritage and the Gaeltacht or a Local Authority.
- Different levels of protection apply to a monument depending on which of the four categories it falls under

Monuments and sites within/close to the proposed development include:

- ① CO074-034009 - Site of parish church of Holy Trinity, Now Christ Church/Triskel
- ② CO074-034010 - Holy Trinity Chantry College.
- ③ CO074-034012 - South Gate Bridge.
- ④ CO074-034011 - St. Laurence's church originally loved at Beamish site.
- ⑤ CO074-039001- Elizabeth Fort.
- ⑥ CO074-037 - Dominican Priory of St. Mary
- ⑦ CO074-038004 - Leper Hospital site.
- ⑧ CO074-038003 - Site of round tower.
- ⑨ CO074-038001 - St. FinBarres Cathedral and graveyard.
- ⑩ CO074-040002 - Cemetery and Church of St Nicholas





# APPENDIX: CULTURAL HERITAGE / CONSERVATION

## Historic Context: ACA

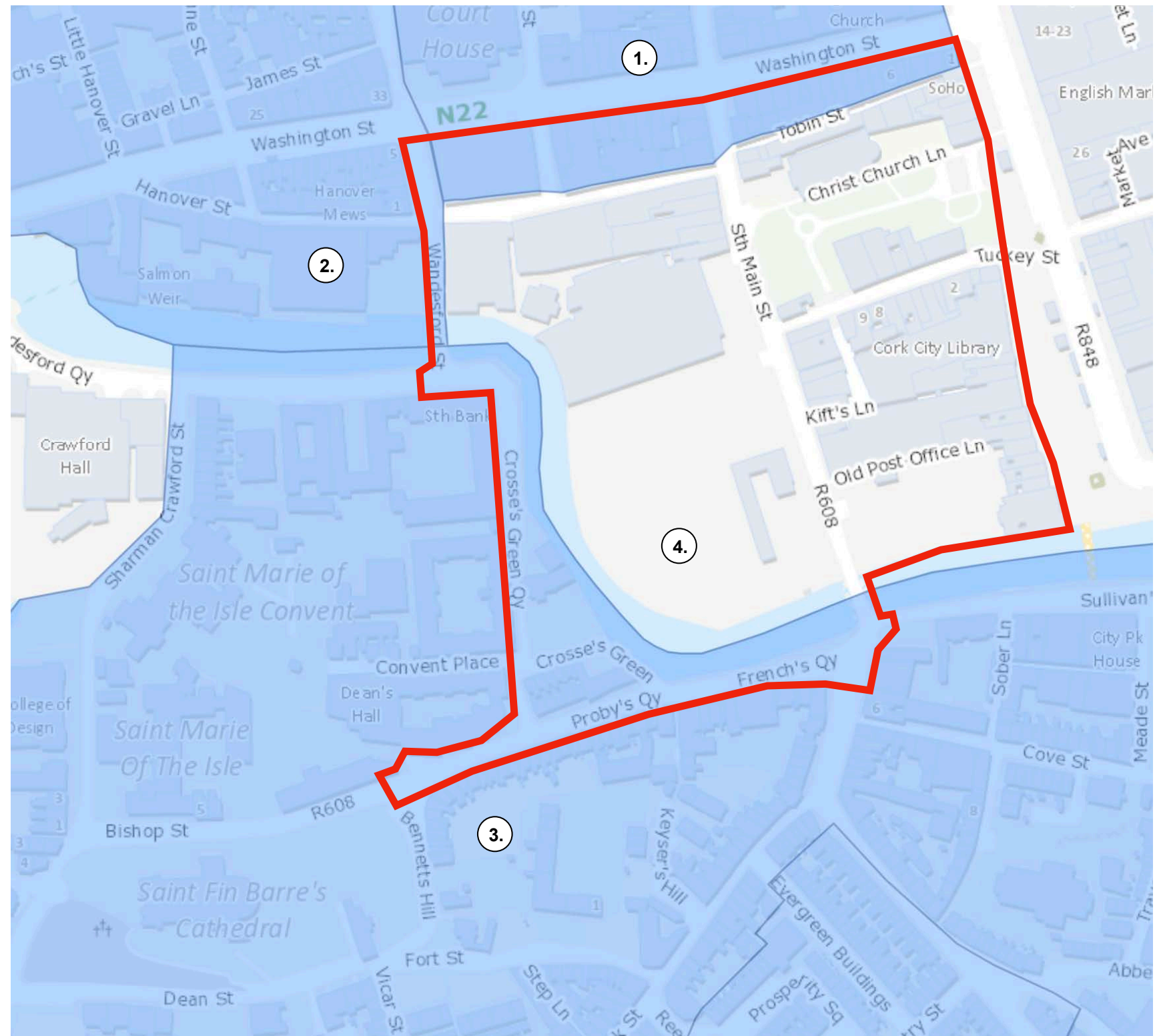
### Architectural Conservation areas

The proposed development is bounded by a number of Architectural Conservation Areas. (ACA's)

An Architectural Conservation Area (ACA) is a place, area, group of structures or townscape that is of special architectural, historical, archaeological, technical, social, cultural, or scientific interest, or that contributes to the appreciation of a Protected Structure/ or series of Protected Structures. It is a mechanism, which aims to identify and protect areas of special significance and promote an awareness of this significance.

The essence of this project is to assist in the craft of creating quality urban spaces, it is about how buildings are put together to shape and enliven our streets and civic spaces. Good urban design supports the economic, social, cultural and sustainability goals of the city. It also creates attractive and sustainable neighbourhoods. High-quality modern urban design should also work in tandem with and enhance long established and historically important buildings, structures, streetscapes and public spaces. None of the proposed works conflict with the objectives of the Architectural Conservation Areas, and the objective is to enhance the existing environment.

- ① North Main Street ACA
- ② North Mall - Marsh Architectural Area Proposal
- ③ South Parish ACA.
- ④ Potential new ACA in City Core.





# APPENDIX: CULTURAL HERITAGE / CONSERVATION

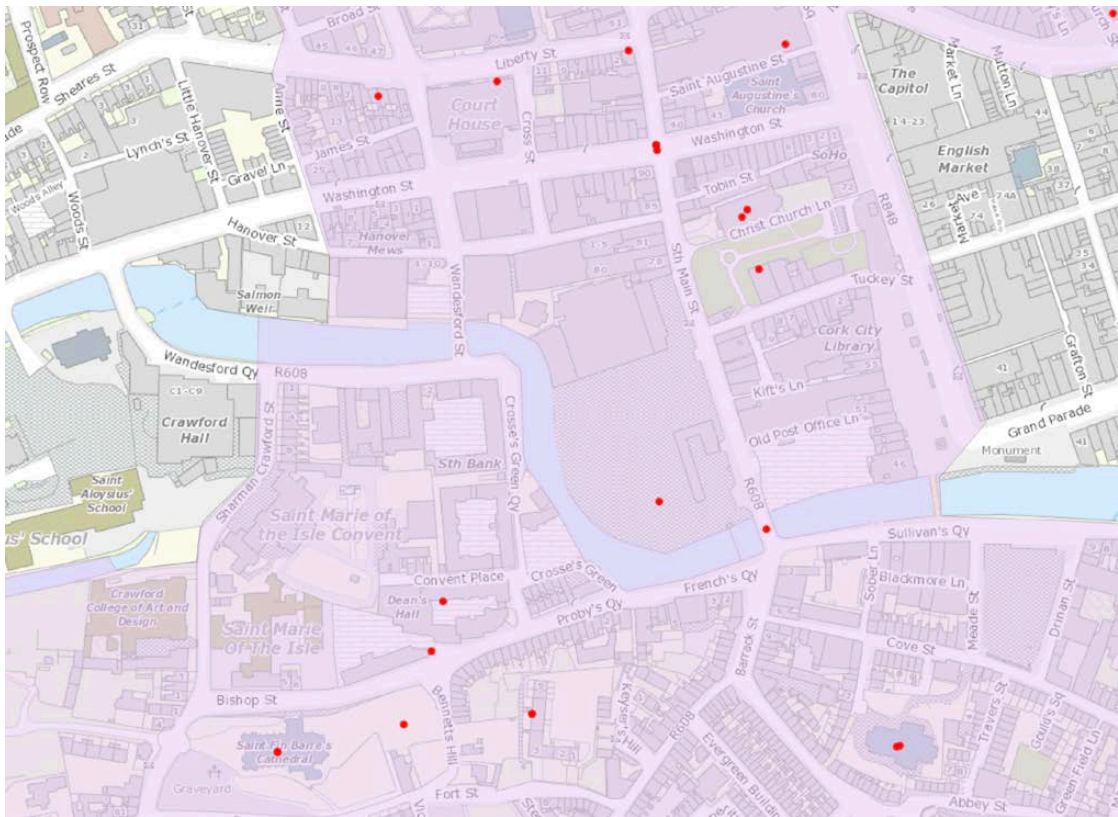
## Historic Context: Archaeology

### Zones of Archaeological Potential

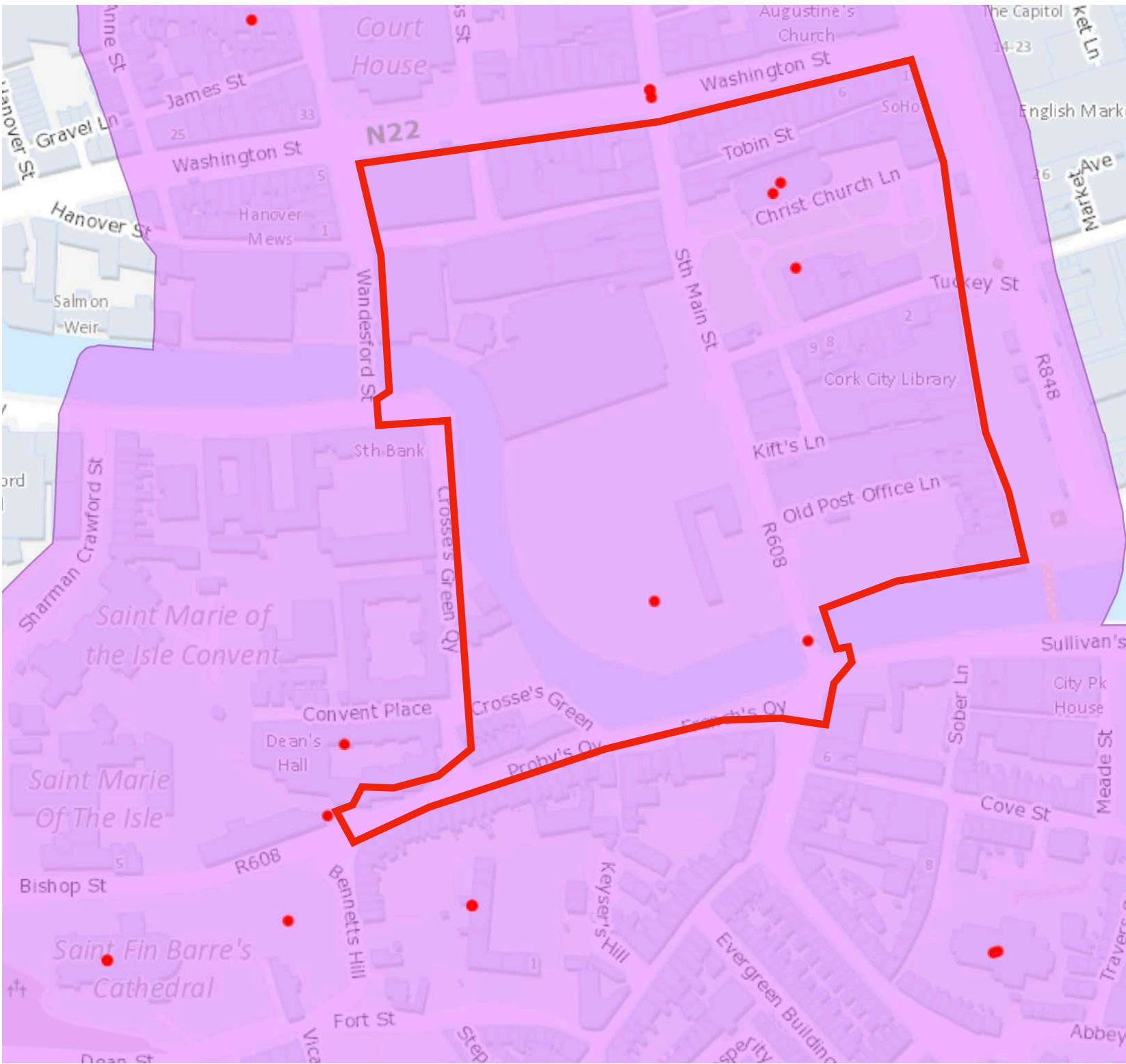
The proposed development site lies within the southern end of the historic, walled, medieval City of Cork and the ‘Zones of Archaeological Potential, and the Notifiable areas. The zones are broadly the same.

The “zone of notification” is the area around each monument that is intended to be used for the purposes of notification under Section 12 of the National Monuments Acts 1930 to 2004.

The zones do not define the exact extent of the monuments but rather are intended to identify them for the purposes of notification under Section 12 of the Act.



Zones of 'Notification'



Zones of 'Archaeological potential.'